

DEVICE DETAILS

Suture Passer

Suture Release Button

Suture Passer Channels

180° suture deployment

Arrow

Indicates proper location of suture loop



Top View

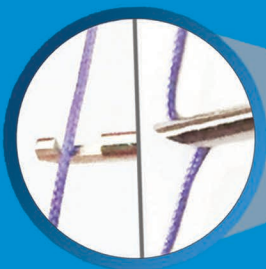
Slider

Stabilizes device for precise suture delivery

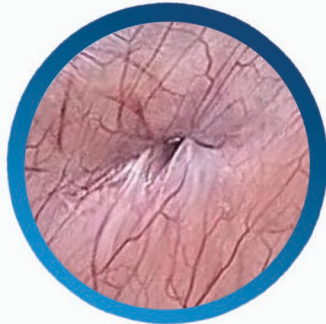
Suture Passer Exit Line

Suture Catcher

Improves stability and consistent suture retrieval



Suture Guide



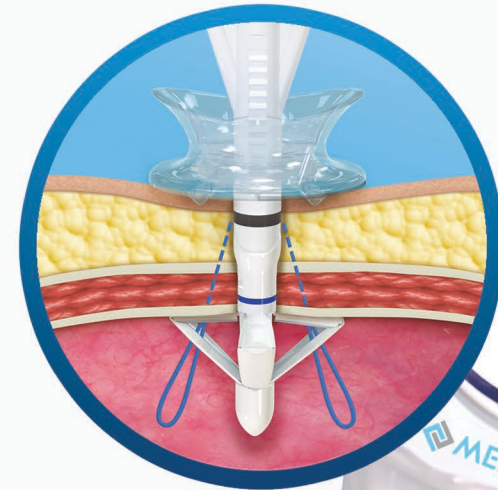
Airtight fascia closure



Symmetrical suturing with sufficient fascia

AbClose™

PORT SITE CLOSURE DEVICE



Contact Us

MedeonBio, Inc.
452 Oakmead Parkway
Sunnyvale, CA 94085
T +1-650-397-5100
E marketing@medeonbio.com
W www.abclose.com

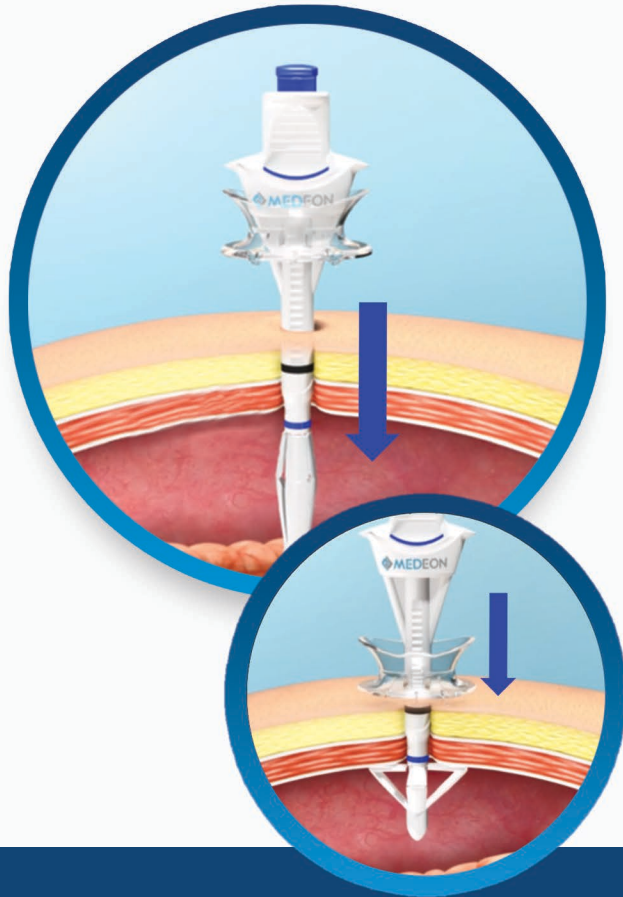


Patent No: US9241613
USFDA 510(k) #: K160117
Model #: M12



1. DEVICE DEPLOYMENT

Simple & Secure



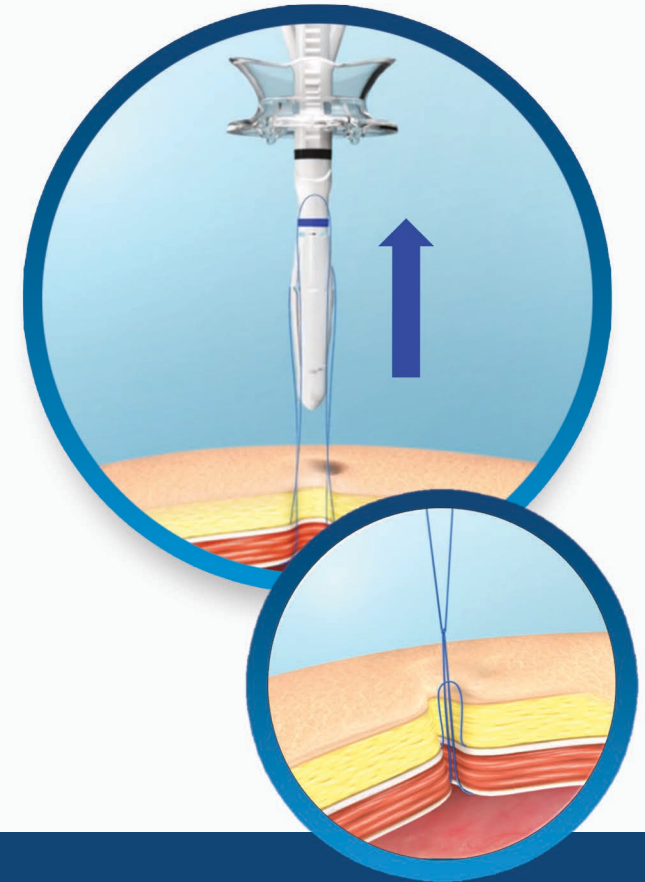
2. SUTURE DEPLOYMENT

Consistent 180° Suturing



3. SUTURE CLOSURE

Quick & Predictable



***Refer to back for device details**

1. Insert Suture Guide through incision with blue button pressed.
2. Release top blue button to deploy Suture Catcher.
3. Black Line below skin indicates for optimal suture placement.
4. Advance Slider downwards to skin to stabilize device.

1. Load 1-5cm of suture onto Suture Passer.
2. Insert Suture Passer into the two different channels to release two ends of suture.
3. Ensure upper suture loop is kept on same side as Arrow.

1. Press blue button on Suture Guide to grasp suture ends.
2. Remove the device from incision site.
3. Flip distal end of device upward to detach suture.
4. Use standard knot tying techniques for desired closure.

ONE SIZE



FITS ALL